

Welcome to the Newage of Soil Pipe

NewAge Casting Company offers an exciting and new opportunity for customers to benefit from a better option for their soil pipe, fittings and coupling needs. We are an established company that knows the value of commitment to our customer.

Due to the cast iron soil pipe industry consolidation, coupled with tougher environmental regulations and enforcement for the past decade, customers have had few options sourcing cast iron soil pipe and fittings. NewAge Casting was established to satisfy our customers' challenge. We will be compliant with rules and regulations and will strive to be your primary source for cast iron soil pipe, fittings and couplings.

NewAge Casting's management team has extensive knowledge and vast experience of over 30 years in the cast iron industry; specifically in the manufacturing, quality control, and distribution of cast iron products.

Product quality and consistency are our focal points. Initial quality control is performed at our overseas plants by the NewAge Casting Company staff and reinspected at our Houston distribution facilities. We aim to satisfy our customers completely. NewAge Casting has also taken enormous strides to change the perception of import products. This can be seen in the increased wall thickness of our pipe and in how smooth our pipe snaps cuts. This is just a small glimpse of our primary focus of "commitment to our customer."

NewAge Casting Company's headquarters is in Houston, Texas, adjacent to our main distribution center and warehouse. We are here to offer you the greatest option for your soil pipe, fitting, and coupling requirements.

**WELCOME TO THE NEWAGE
QUALITY YOU CAN COUNT ON**

**TABLE
OF
CONTENTS**

1 CATALOG

2 PRICE LIST

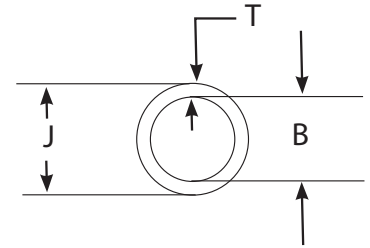
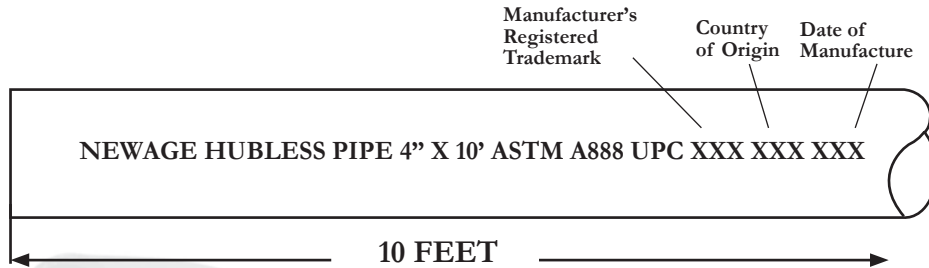
3 SUBMITTALS:
NH - NO HUB
SV - SERVICE WEIGHT
COUPLINGS

4 LISTINGS AND APPROVALS
NH - NO HUB (4818)
SV - SERVICE WEIGHT (6336)

Please contact us for specific documentation requests for any NewAge Casting Products.

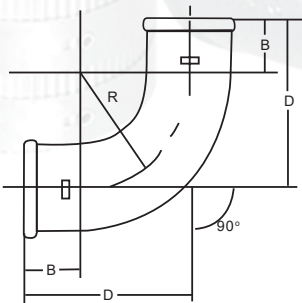
CATALOG

Hubless Cast Iron Soil Pipe and Fittings as per ASTM A888



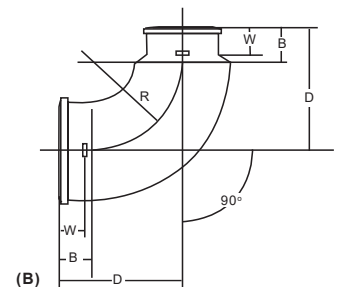
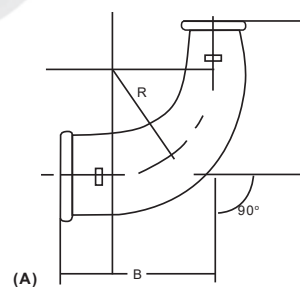
NO - HUB PIPE 10 FOOT

| PART # | SIZE | B | J | NOM T | MIN |
|---------|-------|-------|-------|-------|------|
| 0220156 | 1 1/2 | 1.50 | 1.90 | 0.16 | 0.13 |
| 0220158 | 2 | 1.96 | 2.35 | 0.16 | 0.13 |
| 0220160 | 3 | 2.96 | 3.35 | 0.16 | 0.13 |
| 0220162 | 4 | 3.94 | 4.38 | 0.19 | 0.15 |
| 0220164 | 5 | 4.94 | 5.30 | 0.19 | 0.15 |
| 0220168 | 6 | 5.94 | 6.30 | 0.19 | 0.15 |
| 0220170 | 8 | 7.94 | 8.38 | 0.23 | 0.17 |
| 0220171 | 10 | 10.00 | 10.56 | 0.28 | 0.22 |
| 0220172 | 12 | 11.94 | 12.50 | 0.28 | 0.22 |
| 0220173 | 15 | 15.11 | 15.83 | 0.36 | 0.30 |



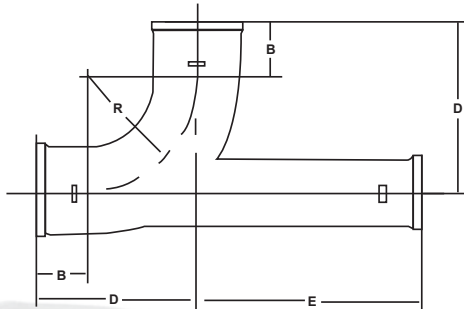
1/4 BEND

| PART # | SIZE | B | D | R |
|---------|-------|-------|-------|-------|
| 0220188 | 1 1/2 | 1 1/2 | 4 1/4 | 2 3/4 |
| 0220190 | 2 | 1 1/2 | 4 1/2 | 3 |
| 0220192 | 3 | 1 1/2 | 5 | 3 1/2 |
| 0220194 | 4 | 1 1/2 | 5 1/2 | 4 |
| 0220196 | 5 | 2 | 6 1/2 | 4 1/2 |
| 0220198 | 6 | 2 | 7 | 5 |
| 0220200 | 8 | 2 1/2 | 8 1/2 | 6 |



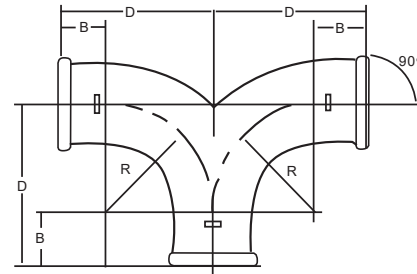
REDUCING 1/4 BEND

| PART # | SIZE | B | D | R | W |
|------------|-------|-------|-------|-------|-------|
| 220218 (A) | 4 x 3 | 1 1/2 | 5 1/2 | 3 1/2 | 1 1/8 |
| 220218 (B) | 4 x 3 | 1 1/2 | 5 1/2 | 4 | 1 1/8 |



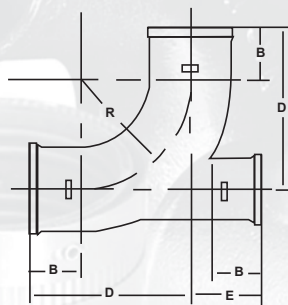
1/4 BEND WITH HEEL OPENING EXTENDED

| PART # | SIZE | B | D | E | R |
|--------|------|-------|-------|--------|-------|
| 220275 | 3x2 | 1 1/2 | 5 | 10 1/2 | 3 1/2 |
| 220277 | 4x2 | 1 1/2 | 5 1/2 | 11 5/8 | 4 |



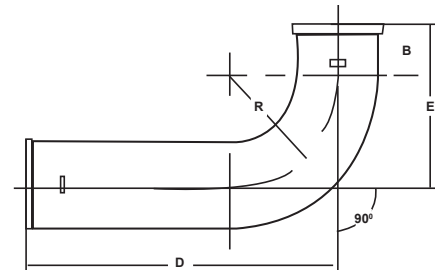
DOUBLE 1/4 BEND

| PART # | SIZE | B | D | R |
|--------|------|-------|-------|-------|
| 220402 | 2 | 1 1/2 | 4 1/2 | 3 |
| 220404 | 3 | 1 1/2 | 5 | 3 1/2 |
| 220406 | 4 | 1 1/2 | 5 1/2 | 4 |



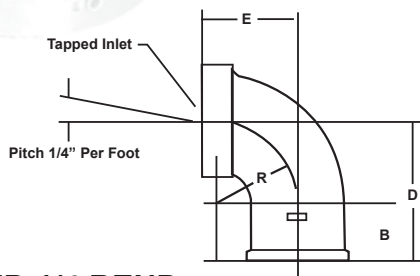
1/4 BEND WITH HEEL OPENING

| PART # | SIZE | B | D | E | R |
|--------|-------|-------|-------|-------|-------|
| 220280 | 3 x 2 | 1 1/2 | 5 | 2 7/8 | 3 1/2 |
| 220282 | 4 x 2 | 1 1/2 | 5 1/2 | 3 1/4 | 4 |



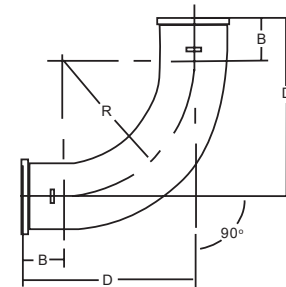
LONG 1/4 BEND

| PART # | SIZE | B | D | E | R |
|--------|--------|-------|----|-------|---|
| 0425 | 2 x 18 | 1 1/2 | 18 | 4 1/2 | 3 |



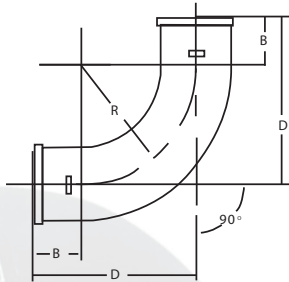
TAPPED 1/4 BEND

| PART # | SIZE | B | D | E | R | TAP |
|--------|---------------|-------|-------|-------|-------|-------|
| 220324 | 1 1/2 x 1 1/4 | 1 1/2 | 3 | 2 | 1 3/4 | 1 1/4 |
| 220326 | 1 1/2 x 1 1/2 | 1 1/2 | 3 | 2 | 1 3/4 | 1 1/2 |
| 220330 | 2 x 1 1/2 | 1 1/2 | 3 1/4 | 2 1/4 | 1 3/4 | 1 1/2 |
| 220332 | 2 x 2 | 1 1/2 | 3 1/4 | 2 1/4 | 1 3/4 | 2 |



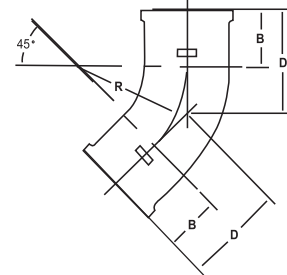
LONG SWEEP (1/4 BEND)

| PART # | SIZE | B | D | R |
|--------|-------|-------|--------|-------|
| 220492 | 1 1/2 | 1 1/2 | 9 1/4 | 7 3/4 |
| 220494 | 2 | 1 1/2 | 9 1/2 | 8 |
| 220496 | 3 | 1 1/2 | 10 | 8 1/2 |
| 220498 | 4 | 1 1/2 | 10 1/2 | 9 |
| 220500 | 5 | 2 | 11 1/2 | 9 1/2 |
| 220502 | 6 | 2 | 12 | 10 |



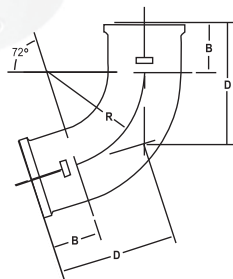
SHORT SWEEP (1/4 BEND)

| PART # | SIZE | B | D | R |
|--------|------|-------|--------|--------|
| 220462 | 2 | 1 1/2 | 6 1/2 | 5 |
| 220464 | 3 | 1 1/2 | 7 | 5 1/2 |
| 220468 | 4 | 1 1/2 | 7 1/2 | 6 |
| 220470 | 5 | 2 | 8 1/2 | 6 1/2 |
| 220472 | 6 | 2 | 9 | 7 |
| 220474 | 8 | 2 1/2 | 10 1/2 | 8 |
| 220475 | 10 | 3 | 12 | 9 |
| 220476 | 12 | 3 1/2 | 13 1/2 | 10 |
| 220477 | 15 | 3 1/2 | 14 1/2 | 11 1/2 |



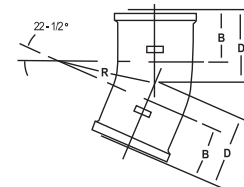
1/8 BEND

| PART # | SIZE | B | D | R |
|--------|-------|-------|---------|-------|
| 220604 | 1 1/2 | 1 1/2 | 2 5/8 | 2 3/4 |
| 220606 | 2 | 1 1/2 | 2 3/4 | 3 |
| 220608 | 3 | 1 1/2 | 3 | 3 1/2 |
| 220610 | 4 | 1 1/2 | 3 1/8 | 4 |
| 220612 | 5 | 2 | 3 7/8 | 4 1/2 |
| 220614 | 6 | 2 | 4 1/16 | 5 |
| 220616 | 8 | 2 1/2 | 5 | 6 |
| 220617 | 10 | 3 | 5 15/16 | 7 |
| 220618 | 12 | 3 1/4 | 6 9/16 | 8 |
| 220619 | 15 | 3 1/4 | 7 3/16 | 9 1/2 |



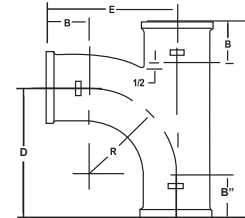
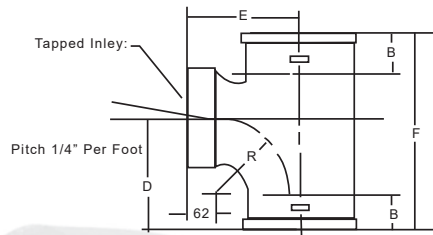
1/5 BEND

| PART # | SIZE | B | D | R |
|--------|------|-------|---------|-------|
| 220536 | 2 | 1 1/2 | 3 11/16 | 3 |
| 220538 | 3 | 1 1/2 | 4 1/16 | 3 1/2 |
| 220540 | 4 | 1 1/2 | 4 7/16 | 4 |



1/16 BEND

| PART # | SIZE | B | D | R |
|--------|-------|-------|--------|-------|
| 220676 | 1 1/2 | 1 1/2 | 2 1/8 | 2 3/4 |
| 220678 | 2 | 1 1/2 | 2 1/8 | 3 |
| 220680 | 3 | 1 1/2 | 2 1/4 | 3 1/2 |
| 220682 | 4 | 1 1/2 | 2 5/16 | 4 |
| 220684 | 5 | 2 | 2 7/8 | 4 1/2 |
| 220686 | 6 | 2 | 3 | 5 |
| 220688 | 8 | 2 1/2 | 3 3/4 | 6 |

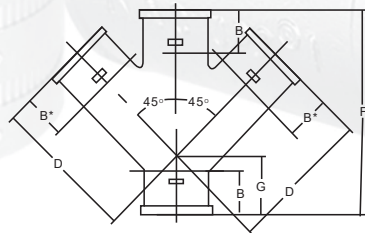


SANITARY TAP TEE

| PART# | SIZE | B | D | E | F | R | TAP |
|--------|---------------|-------|-------|---------|---------|-------|-------|
| 221208 | 1 1/2 x 1 1/4 | 1 1/2 | 3 1/4 | 2 9/16 | 5 11/16 | 1 3/4 | 1 1/4 |
| 221210 | 1 1/2 x 1 1/2 | 1 1/2 | 3 1/4 | 2 9/16 | 5 11/16 | 1 3/4 | 1 1/2 |
| 221212 | 2 x 1 1/4 | 1 1/2 | 3 1/4 | 2 13/16 | 5 11/16 | 1 3/4 | 1 1/4 |
| 221214 | 2 x 1 1/2 | 1 1/2 | 3 1/4 | 2 13/16 | 5 11/16 | 1 3/4 | 1 1/2 |
| 221216 | 2 x 2 | 1 1/2 | 3 3/4 | 3 1/16 | 6 3/8 | 2 1/4 | 2 |
| 221220 | 3 x 1 1/2 | 1 1/2 | 3 1/4 | 3 5/16 | 5 11/16 | 1 3/4 | 1 1/2 |
| 221222 | 3 x 2 | 1 1/2 | 3 3/4 | 3 9/16 | 6 3/8 | 2 1/4 | 2 |
| 221223 | 3 x 3 | 1 1/2 | 4 7/8 | 4 3/16 | 8 | 3 1/2 | 3 |
| 221226 | 4 x 1 1/2 | 1 1/2 | 3 1/4 | 3 13/16 | 5 11/16 | 1 3/4 | 1 1/2 |
| 221228 | 4 x 2 | 1 1/2 | 3 3/4 | 4 1/16 | 6 3/8 | 2 1/4 | 2 |

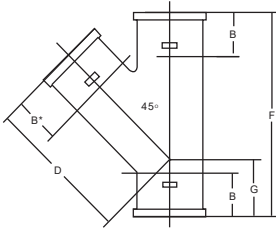
SANITARY TEE

| PART# | SIZE | B | B'' | D | E | F | R |
|--------|-----------|-------|-------|-------|-------|----------|-------|
| 220806 | 1 1/2 | 1 1/2 | 1 1/2 | 4 1/4 | 4 1/4 | 6 1/2 | 2 3/4 |
| 220808 | 2 x 1 1/2 | 1 1/2 | 1 1/2 | 4 1/4 | 4 1/2 | 6 5/8 | 2 3/4 |
| 220810 | 2 | 1 1/2 | 1 1/2 | 4 1/2 | 4 1/2 | 6 7/8 | 3 |
| 220812 | 3 x 1 1/2 | 1 1/2 | 1 1/2 | 4 1/4 | 5 | 6 1/2 | 2 3/4 |
| 220814 | 3 x 2 | 1 1/2 | 1 1/2 | 4 1/2 | 5 | 6 7/8 | 3 |
| 220816 | 3 | 1 1/2 | 1 1/2 | 5 | 5 | 8 | 3 1/2 |
| 220818 | 4 x 2 | 1 1/2 | 1 1/2 | 4 1/2 | 5 1/2 | 6 7/8 | 3 |
| 220820 | 4 x 3 | 1 1/2 | 1 1/2 | 5 | 5 1/2 | 8 | 3 1/2 |
| 220822 | 4 | 1 1/2 | 1 1/2 | 5 1/2 | 5 1/2 | 9 1/8 | 4 |
| 220824 | 5 x 2 | 2 | 1 1/2 | 5 | 6 1/2 | 8 1/2 | 3 |
| 220826 | 5 x 3 | 2 | 1 1/2 | 5 1/2 | 6 | 9 5/16 | 3 1/2 |
| 220828 | 5 x 4 | 2 | 1 1/2 | 6 | 6 | 10 13/32 | 4 |
| 220830 | 5 | 2 | 2 | 6 1/2 | 6 1/2 | 11 7/16 | 4 1/2 |
| 220832 | 6 x 2 | 2 | 1 1/2 | 5 | 6 1/2 | 8 3/16 | 3 |
| 220834 | 6 x 4 | 2 | 1 1/2 | 6 | 6 1/2 | 10 11/16 | 4 |
| 220835 | 6 x 5 | 2 | 2 | 6 1/2 | 7 | 11 1/2 | 4 1/2 |
| 220836 | 6 | 2 | 2 | 7 | 7 | 12 1/2 | 5 |
| 220838 | 6 x 3 | 2 | 1 1/2 | 5 1/2 | 6 1/2 | 9 3/16 | 3 1/2 |
| 220848 | 8 x 3 | 2 1/2 | 1 1/2 | 6 | 7 1/2 | 10 3/8 | 3 1/2 |
| 220846 | 8 x 4 | 2 1/2 | 1 1/2 | 6 1/2 | 7 1/2 | 11 1/2 | 4 |
| 220844 | 8 x 5 | 2 1/2 | 2 | 7 | 8 | 12 1/2 | 4 1/2 |
| 220842 | 8 x 6 | 2 1/2 | 2 | 7 1/2 | 8 | 13 1/2 | 5 |
| 220840 | 8 | 2 1/2 | 2 1/2 | 8 1/2 | 8 1/2 | 15 1/2 | 6 |



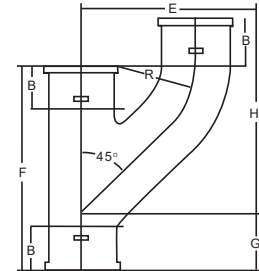
DOUBLE WYE

| PART# | SIZE | B | B* | D | F | G |
|--------|-------|-------|-------|----------|----------|---------|
| 221538 | 2 | 1 1/2 | 1 1/2 | 4 5/8 | 6 5/8 | 2 |
| 221540 | 3 x 2 | 1 1/2 | 1 1/2 | 5 5/16 | 6 5/8 | 1 1/2 |
| 221542 | 3 | 1 1/2 | 1 1/2 | 5 3/4 | 8 | 2 1/4 |
| 221544 | 4 x 2 | 1 1/2 | 1 1/2 | 6 | 6 5/8 | 1 |
| 221546 | 4 x 3 | 1 1/2 | 1 1/2 | 6 1/2 | 8 | 1 11/16 |
| 221548 | 4 | 1 1/2 | 1 1/2 | 7 1/16 | 9 1/2 | 2 7/16 |
| 221552 | 6 x 4 | 2 | 1 1/2 | 9 1/4 | 11 3/16 | 1 15/16 |
| 221554 | 6 | 2 | 2 | 10 3/4 | 14 1/16 | 3 5/16 |
| 221557 | 8 x 6 | 2 1/2 | 2 3/4 | 11 13/16 | 14 13/16 | 2 5/16 |
| 221558 | 8 | 2 1/2 | 3 1/4 | 13 3/8 | 17 1/8 | 3 3/4 |



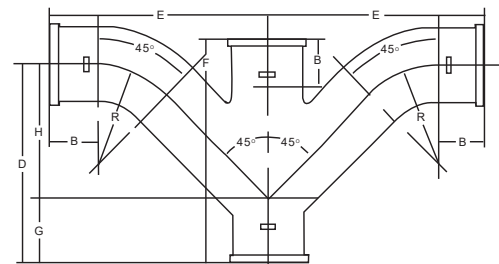
WYE

| PART # | SIZE | B | B* | D | F | G |
|--------|--------|-------|-------|----------|----------|---------|
| 221312 | 1 1/2 | 1 1/2 | 1 1/2 | 4 | 6 | 2 |
| 221314 | 2 | 1 1/2 | 1 1/2 | 4 5/8 | 6 5/8 | 2 |
| 221316 | 3 x 2 | 1 1/2 | 1 1/2 | 5 5/16 | 6 5/8 | 1 1/2 |
| 221318 | 3 | 1 1/2 | 1 1/2 | 5 3/4 | 8 | 2 1/4 |
| 221320 | 4 x 2 | 1 1/2 | 1 1/2 | 6 | 6 5/8 | 1 |
| 221322 | 4 x 3 | 1 1/2 | 1 1/2 | 6 1/2 | 8 | 1 11/16 |
| 221324 | 4 | 1 1/2 | 1 1/2 | 7 1/16 | 9 1/2 | 2 7/16 |
| 221326 | 5 x 2 | 2 | 1 1/2 | 7 1/2 | 8 1/16 | 15/16 |
| 221328 | 5 x 3 | 2 | 1 1/2 | 8 | 9 11/16 | 1 11/16 |
| 221330 | 5 x 4 | 2 | 1 1/2 | 8 1/2 | 11 3/16 | 2 7/16 |
| 221332 | 5 | 2 | 2 | 9 1/2 | 12 5/8 | 3 1/8 |
| 221334 | 6 x 2 | 2 | 1 1/2 | 8 1/4 | 8 5/16 | 1/2 |
| 221336 | 6 x 3 | 2 | 1 1/2 | 8 3/4 | 9 3/4 | 1 1/4 |
| 221338 | 6 x 4 | 2 | 1 1/2 | 9 1/4 | 11 3/16 | 1 15/16 |
| 221340 | 6 x 5 | 2 | 2 | 10 1/4 | 12 1/2 | 2 9/16 |
| 221342 | 6 | 2 | 2 | 10 3/4 | 14 1/16 | 3 5/16 |
| 221344 | 8 x 2 | 2 1/2 | 2 1/4 | 9 3/8 | 8 1/2 | 9/16 |
| 221346 | 8 x 3 | 2 1/2 | 2 1/4 | 9 13/16 | 9 15/16 | 1/8 |
| 221348 | 8 x 4 | 2 1/2 | 2 1/4 | 10 3/8 | 11 7/16 | 15/16 |
| 221350 | 8 x 5 | 2 1/2 | 2 3/4 | 11 3/8 | 12 13/16 | 1 5/8 |
| 221352 | 8 x 6 | 2 1/2 | 2 3/4 | 11 13/16 | 14 3/16 | 2 5/16 |
| 221354 | 8 | 2 1/2 | 3 1/4 | 13 3/8 | 17 1/8 | 3 3/4 |
| 221357 | 10 x 4 | 3 | 2 1/2 | 11 11/16 | 12 5/8 | 3/4 |
| 221359 | 10 x 6 | 3 | 2 | 13 1/8 | 15 7/16 | 2 3/16 |
| 221360 | 10 x 8 | 3 | 2 1/2 | 14 11/16 | 18 3/8 | 3 5/8 |
| 221361 | 10 | 3 | 3 | 16 1/2 | 21 1/2 | 5 1/6 |
| 221362 | 12 | 3 1/4 | 3 1/4 | 19 3/4 | 25 1/2 | 5 3/4 |
| 221363 | 15 | 3 1/4 | 3 1/4 | 23 1/4 | 30 | 6 3/4 |



UPRIGHT WYE

| PART # | SIZE | B | E | F | G | H | R |
|--------|-------|-------|-------|-------|---------|--------|-------|
| 221646 | 2 | 1 1/2 | 5 1/2 | 7 | 2 | 8 1/4 | 3 |
| 221648 | 3 x 2 | 1 1/2 | 5 1/2 | 7 | 1 1/2 | 8 3/16 | 3 |
| 221650 | 3 | 1 1/2 | 5 1/2 | 8 3/8 | 2 3/16 | 8 7/16 | 3 1/2 |
| 221652 | 4 x 2 | 1 1/2 | 5 1/2 | 7 | 1 | 8 1/4 | 3 |
| 221654 | 4 x 3 | 1 1/2 | 5 1/2 | 8 3/8 | 1 11/16 | 8 7/16 | 3 1/2 |
| 221656 | 4 | 1 1/2 | 6 | 9 3/4 | 2 7/16 | 9 1/8 | 4 |

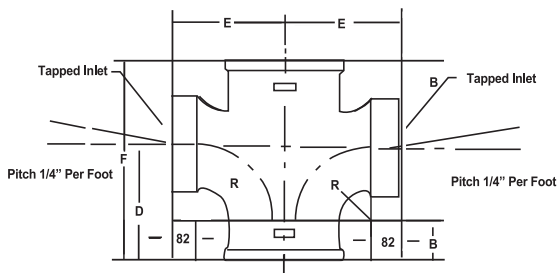
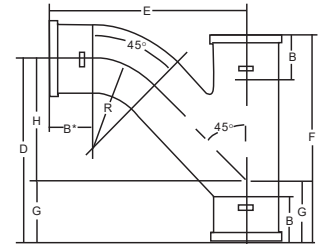


DOUBLE COMBINATION WYE AND 1/8 BEND

| PART # | SIZE | B | D | E | F | G | H | R |
|--------|-------|-------|--------|-------|-------|--------|---------|-------|
| 221802 | 2 | 1 1/2 | 5 3/8 | 6 1/8 | 6 5/8 | 2 | 3 3/8 | 3 |
| 221804 | 3 x 2 | 1 1/2 | 5 1/2 | 6 3/4 | 6 5/8 | 1 1/2 | 4 | 3 |
| 221806 | 3 | 1 1/2 | 7 5/16 | 8 | 8 | 2 1/4 | 5 1/16 | 3 1/2 |
| 221808 | 4 x 2 | 1 1/2 | 5 1/2 | 7 1/4 | 6 5/8 | 1 | 4 1/2 | 3 |
| 221810 | 4 x 3 | 1 1/2 | 7 1/4 | 8 1/2 | 8 | 1 1/16 | 5 9/14 | 3 1/2 |
| 221812 | 4 | 1 1/2 | 9 1/4 | 10 | 9 1/2 | 2 7/16 | 6 13/16 | 4 |

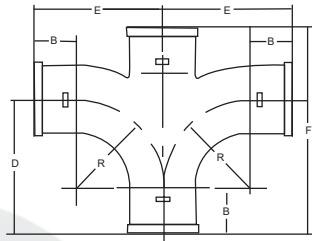
COMBINATION WYE AND 1/8 BEND

| PART # | SIZE | B | B* | D | E | F | G | H | R |
|--------|-----------|-------|-------|----------|----------|----------|---------|---------|-------|
| 221694 | 1 1/2 | 1 1/2 | 1 1/2 | 4 3/4 | 5 3/8 | 6 | 2 | 2 3/4 | 2 3/4 |
| 221696 | 2 x 1 1/2 | 1 1/2 | 1 1/2 | 5 7/8 | 6 1/8 | 6 | 2 | 3 | 3 |
| 221698 | 2 | 1 1/2 | 1 1/2 | 5 3/8 | 6 1/8 | 6 5/8 | 2 | 3 3/8 | 3 |
| 221700 | 3 x 2 | 1 1/2 | 1 1/2 | 5 1/2 | 6 3/4 | 6 5/8 | 1 1/2 | 4 | 3 |
| 221702 | 3 | 1 1/2 | 1 1/2 | 7 5/16 | 8 | 8 | 2 1/4 | 5 1/16 | 3 1/2 |
| 221704 | 4 x 2 | 1 1/2 | 1 1/2 | 5 1/2 | 7 1/4 | 6 5/8 | 1 | 4 1/2 | 3 |
| 221706 | 4 x 3 | 1 1/2 | 1 1/2 | 7 1/4 | 8 1/2 | 8 | 1 11/16 | 5 9/16 | 3 1/2 |
| 221708 | 4 | 1 1/2 | 1 1/2 | 9 1/4 | 10 | 9 1/2 | 2 7/16 | 6 13/16 | 4 |
| 221710 | 5 x 2 | 2 | 1 1/2 | 5 15/16 | 7 3/4 | 8 1/16 | 15/16 | 5 | 3 |
| 221712 | 5 x 3 | 2 | 1 1/2 | 7 3/4 | 9 | 9 11/16 | 1 11/16 | 6 1/16 | 3 1/2 |
| 221714 | 5 x 4 | 2 | 1 1/2 | 9 3/4 | 10 1/2 | 11 3/16 | 2 7/16 | 7 5/16 | 4 |
| 221716 | 5 | 2 | 2 | 11 3/4 | 12 1/2 | 12 5/8 | 3 1/8 | 8 5/8 | 4 1/2 |
| 221718 | 6 x 2 | 2 | 1 1/2 | 6 | 8 1/4 | 8 5/16 | 1/2 | 5 1/2 | 3 |
| 221720 | 6 x 3 | 2 | 1 1/2 | 7 13/16 | 9 1/2 | 9 3/4 | 1 1/4 | 6 9/16 | 3 1/2 |
| 221722 | 6 x 4 | 2 | 1 1/2 | 9 3/4 | 11 | 11 3/16 | 1 15/16 | 7 13/16 | 4 |
| 221724 | 6 x 5 | 2 | 2 | 14 11/16 | 13 | 12 1/2 | 2 9/16 | 9 1/8 | 4 1/2 |
| 221726 | 6 | 2 | 2 | 13 5/8 | 14 3/8 | 14 1/16 | 3 5/16 | 10 5/16 | 5 |
| 221728 | 8 x 4 | 2 1/2 | 1 1/2 | 9 7/16 | 11 5/16 | 11 3/16 | 7/8 | 8 9/16 | 4 |
| 221730 | 8 x 5 | 2 1/2 | 2 | 10 15/16 | 12 13/16 | 11 3/16 | 7/8 | 8 9/16 | 4 |
| 221732 | 6 x 6 | 2 1/2 | 2 | 12 | 13 3/8 | 13 15/16 | 2 1/4 | 9 3/4 | 5 |
| 221734 | 8 | 2 1/2 | 1 1/2 | 14 3/4 | 15 9/15 | 16 15/16 | 3 3/4 | 11 | 6 |



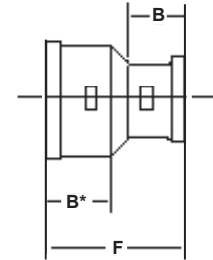
SANITARY TAP CROSS

| PART # | SIZE | B | D | E | F | R | TAP |
|--------|---------------|-------|-------|---------|---------|-------|-------|
| 222012 | 1 1/2 x 1 1/2 | 1 1/2 | 3 1/4 | 2 9/16 | 5 11/16 | 1 3/4 | 1 1/2 |
| 222014 | 2 x 1 1/4 | 1 1/2 | 3 1/4 | 2 13/16 | 5 11/16 | 1 3/4 | 1 1/4 |
| 222016 | 2 x 1 1/2 | 1 1/2 | 3 1/4 | 2 13/16 | 5 11/16 | 1 3/4 | 1 1/2 |
| 222018 | 2 x 2 | 1 1/2 | 3 3/4 | 3 1/16 | 6 3/8 | 2 1/4 | 2 |
| 222022 | 3 x 1 1/2 | 1 1/2 | 3 1/4 | 3 5/16 | 5 11/16 | 1 3/4 | 1 1/2 |
| 222024 | 3 x 2 | 1 1/2 | 3 3/4 | 3 9/16 | 6 3/8 | 2 1/4 | 2 |
| 222028 | 4 x 1 1/2 | 1 1/2 | 3 1/4 | 3 13/16 | 5 11/16 | 1 3/4 | 1 1/2 |



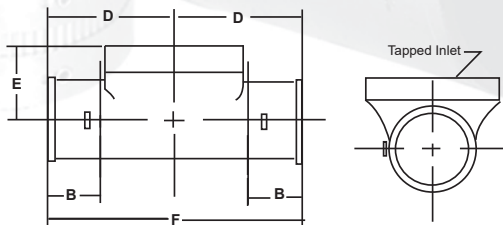
SANITARY CROSS

| PART # | SIZE | B | D | E | F | R |
|--------|-------|-------|-------|---------|---------|-------|
| 1850 | 1 1/2 | 1 1/2 | 4 1/4 | 4 1/4 | 6 1/2 | 2 3/4 |
| 1852 | 2 | 1 1/2 | 4 1/2 | 4 1/2 | 6 7/8 | 3 |
| 1854 | 3 x 2 | 1 1/2 | 4 1/2 | 5 | 6 7/8 | 3 |
| 1856 | 3 | 1 1/2 | 5 | 5 | 8 | 3 1/2 |
| 1858 | 4 x 2 | 1 1/2 | 4 1/2 | 5 1/2 | 6 7/8 | 3 |
| 1860 | 4 x 3 | 1 1/2 | 5 | 5 1/2 | 8 | 3 1/2 |
| 1862 | 4 | 1 1/2 | 5 1/2 | 5 1/2 | 9 1/8 | 4 |
| 1864 | 6 x 4 | 2 | 6 | 6 1/2 | 10 1/16 | 4 |
| 1867 | 6 | 2 | 7 | 10 1/16 | 7 | 5 |
| 1874 | 8 x 4 | 2 1/2 | 7 1/2 | 11 1/2 | 6 1/2 | 4 |



SHORT INCREASER REDUCER

| PART # | SIZE | B | B* | F |
|--------|-----------|-------|-------|-------|
| 222138 | 2 x 1 1/2 | 1 1/2 | 1 1/2 | 3 5/8 |
| 222140 | 3 x 2 | 1 1/2 | 1 1/2 | 3 5/8 |
| 222142 | 4 x 2 | 1 1/2 | 1 1/2 | 3 5/8 |
| 222144 | 4 x 3 | 1 1/2 | 1 1/2 | 3 5/8 |
| 222146 | 5 x 2 | 1 1/2 | 2 | 4 |
| 222148 | 5 x 3 | 1 1/2 | 2 | 4 |
| 222150 | 5 x 4 | 1 1/2 | 2 | 4 |
| 222152 | 6 x 2 | 1 1/2 | 2 | 4 |
| 222154 | 6 x 3 | 1 1/2 | 2 | 4 |
| 222156 | 6 x 4 | 1 1/2 | 2 | 4 |
| 222158 | 6 x 5 | 2 | 2 | 4 1/2 |
| 222160 | 8 x 2 | 1 1/2 | 2 | 4 1/2 |
| 222162 | 8 x 3 | 1 1/2 | 2 | 4 1/2 |
| 222164 | 8 x 4 | 1 1/2 | 2 | 4 1/2 |
| 222166 | 8 x 5 | 2 | 2 | 5 |
| 222168 | 8 x 6 | 2 | 2 | 5 |
| 222172 | 10 x 4 | 1 1/2 | 3 | 5 1/2 |
| 222174 | 10 x 6 | 2 | 3 | 6 |
| 222175 | 10 x 8 | 2 | 3 | 6 |
| 222176 | 12 x 4 | 1 1/2 | 3 1/4 | 6 1/2 |
| 222177 | 12 x 6 | 2 | 3 1/4 | 6 1/2 |
| 222178 | 12 x 8 | 2 1/2 | 3 1/4 | 7 |
| 222179 | 12 x 10 | 3 | 3 1/4 | 7 1/2 |
| 222180 | 15 x 4 | 1 1/2 | 3 1/4 | 7 |
| 222181 | 15 x 6 | 2 | 3 1/4 | 7 |
| 222182 | 15 x 8 | 2 1/2 | 3 1/4 | 7 |
| 222183 | 15 x 10 | 3 | 3 1/4 | 7 1/2 |
| 222184 | 15 x 12 | 3 1/4 | 3 1/4 | 7 3/4 |

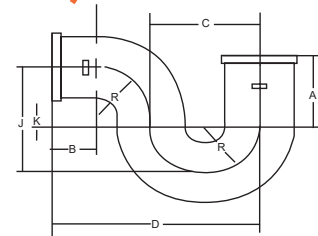
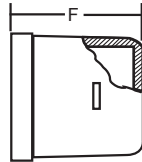


TEST TEE

| PART # | SIZE | B | D | E | F | TAP |
|--------|------|-------|--------|---------|--------|-----|
| 222046 | 2 | 1 1/2 | 3 3/16 | 2 | 6 3/8 | 2 |
| 222048 | 3 | 1 1/2 | 3 7/8 | 2 11/16 | 7 3/4 | 3 |
| 222050 | 4 | 1 1/2 | 4 7/16 | 3 | 8 7/8 | 4 |
| 222052 | 5 | 2 | 5 3/4 | 4 1/2 | 11 1/2 | 5 |
| 222054 | 6 | 2 | 6 1/4 | 5 | 12 1/2 | 6 |
| 222056 | 8 | 8 | 7 5/8 | 6 | 15 1/4 | 8 |
| 222058 | 10 | 4 | 10 | 6 1/2 | 20 | 10 |

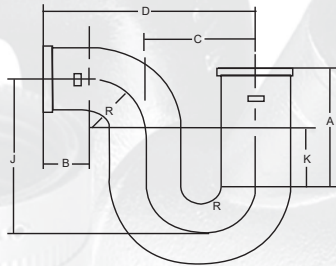
BLIND PLUG

| PART # | SIZE | F |
|--------|-------|-------|
| 222480 | 1 1/2 | 1 3/4 |
| 222482 | 2 | 1 3/4 |
| 222484 | 3 | 1 3/4 |
| 222486 | 4 | 1 3/4 |
| 222490 | 6 | 1 3/4 |
| 222492 | 8 | 2 1/4 |
| 222494 | 10 | 3 |
| 222495 | 12 | 3 1/2 |
| 222496 | 15 | 3 1/2 |



P-TRAP

| PART # | SIZE | A | B | C | D | J | K |
|--------|------|-------|-------|---|--------|-------|-----|
| 222508 | 2 | 2 | 1 1/2 | 4 | 7 1/2 | 4 | 0 |
| 222510 | 3 | 3 1/4 | 1 1/2 | 5 | 9 | 5 1/2 | 1/2 |
| 222512 | 4 | 4 | 1 1/2 | 6 | 10 1/2 | 6 1/2 | 1/2 |



DEEP SEAL P-TRAP

| PART # | SIZE | A | B | C | D | J | K | R |
|--------|------|-------|-------|---|--------|---|---|-------|
| 222564 | 2 | 5 | 1 1/2 | 4 | 7 1/2 | 7 | 3 | 2 |
| 222566 | 3 | 4 1/2 | 1 1/2 | 5 | 9 | 7 | 2 | 2 1/2 |
| 222567 | 4 | 5 | 1 1/2 | 6 | 10 1/2 | 8 | 2 | 3 |

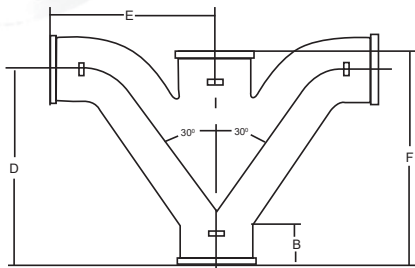
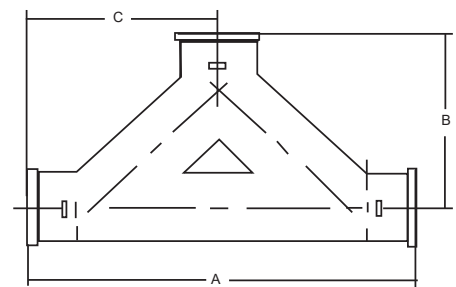


FIGURE FIVE (COMB)

| PART # | SIZE | B | D | E | F |
|--------|---------|-------|--------|--------|--------|
| 228057 | 2 | 1 1/2 | 6 1/2 | 5 | 8 |
| 228054 | 3x2x3x3 | 1 1/2 | 8 7/8 | 6 9/16 | 9 1/4 |
| 228056 | 3 | 1 1/2 | 8 7/8 | 6 9/16 | 10 1/8 |
| 228058 | 4x2x4x4 | 1 1/2 | 10 1/4 | 7 3/4 | 11 1/2 |
| 228062 | 4 | 1 1/2 | 10 1/4 | 7 3/4 | 12 |



TWO WAY BAFFLE CLEANOUT

| PART # | SIZE | A | B | C |
|--------|-----------|--------|-------|-------|
| 228442 | 3 x 3 x 4 | 15 | 9 | 7 1/2 |
| 228444 | 4 x 3 x 4 | 19 1/2 | 9 1/2 | 9 1/8 |
| 228446 | 4 x 4 x 4 | 18 3/4 | 9 1/2 | 9 1/8 |

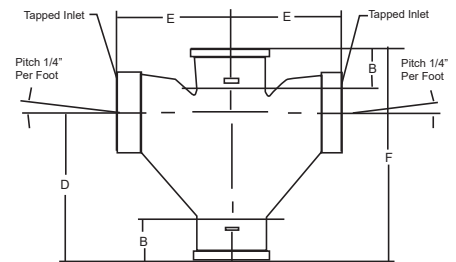
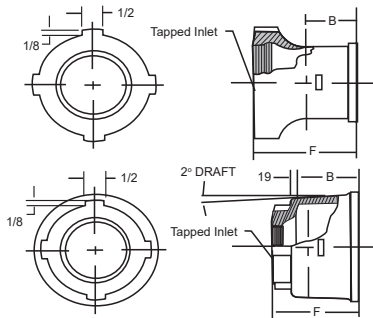


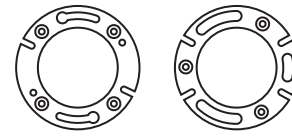
FIGURE ONE (TAP CROSS)

| PART # | SIZE | B | C | D | E | F | TAP |
|--------|-----------|-------|-------|-------|--------|---|-------|
| 228002 | 2 x 1 1/2 | 1 1/2 | 2 1/8 | 4 7/8 | 3 3/16 | 7 | 1 1/2 |



TAP ADAPTER/FERRULE

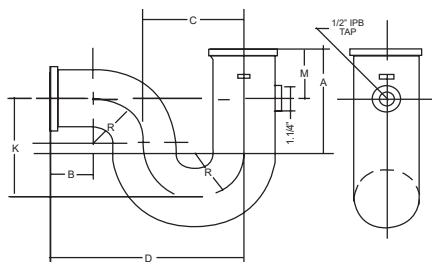
| PART # | SIZE | B | F | TAP |
|--------|------------|-------|--------|-------|
| 222242 | 2 x 1 1/2" | 1 1/2 | 2 3/16 | 1 1/2 |
| 222244 | 2 | 1 1/2 | 2 5/8 | 2 |



NEOPRENE GASKET

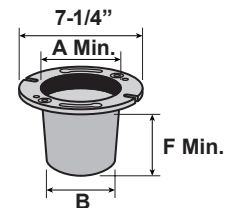
CLOSET FLANGE MECHANICAL

| PART # | SIZE | A | WEIGHT |
|--------|-------|---|--------|
| 222980 | 4 x 2 | 2 | 5.6 |



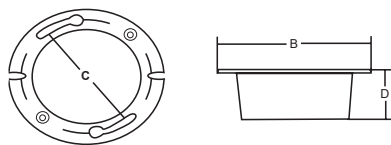
P - TRAP W / 1/2" PRIMER TAP

| PART # | SIZE | A | B | C | D | J | K | R | M |
|--------|------|-------|-------|---|--------|-------|-----|-------|---|
| 228530 | 2 | 2 | 1 1/2 | 4 | 7 1/2 | 4 | 0 | 2 | 2 |
| 228532 | 3 | 3 1/4 | 1 1/2 | 5 | 9 | 5 1/2 | 1/2 | 2 1/2 | 2 |
| 228534 | 4 | 4 | 1 1/2 | 6 | 10 1/2 | 6 1/2 | 1/2 | 3 | 2 |



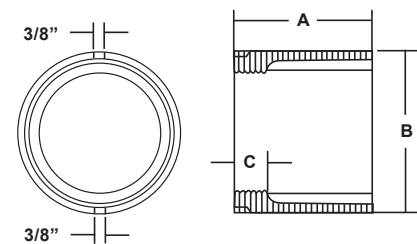
CLOSET FLANGE RISER

| PART # | SIZE | A | B | F | WEIGHT |
|--------|-------|---|---|-------|--------|
| 222966 | 4 x 2 | 4 | 3 | 3-1/2 | 4 |



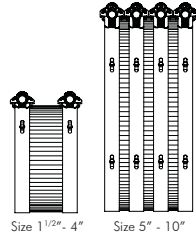
CLOSET FLANGES

| PART # | SIZE | B | D | C |
|--------|-------|-------|---|-------|
| 229426 | 4 x 2 | 7 1/4 | 2 | 6 1/4 |
| 222968 | 4 x 3 | 7 1/4 | 3 | 6 1/4 |
| 228413 | 4 x 4 | 7 1/4 | 4 | 6 1/4 |



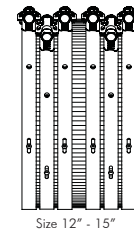
CLEANOUT FERRULE (I.B.C.O.)

| PART # | SIZE | A | B | TAP |
|--------|------|--------|--------|-------|
| 228562 | 2 | 2 3/16 | 2 3/8 | 1 1/2 |
| 228564 | 3 | 2 3/16 | 3 3/8 | 2 1/2 |
| 228566 | 4 | 2 3/16 | 4 7/16 | 3 1/2 |
| 228570 | 6 | 4 1/2 | 6 5/16 | 5 |



STANDARD STAINLESS STEEL COUPLINGS

| SIZE | ITEM CODE | # OF BANDS PER COUPLING | INSTALLATION TORQUE (in. lbs.) |
|-----------|-----------|-------------------------|--------------------------------|
| 1 1/2 | SSC150 | 2 | 60 |
| 2 X 1 1/2 | SSC215 | 2 | 60 |
| 2 | SSC200 | 2 | 60 |
| 3 X 2 | SSC320 | 2 | 60 |
| 3 | SSC300 | 2 | 60 |
| 4 X 2 | SSC420 | 2 | 60 |
| 4 X 3 | SSC430 | 2 | 60 |
| 4 | SSC400 | 2 | 60 |
| 5 | SSC500 | 4 | 60 |
| 6 | SSC600 | 4 | 60 |
| 8 | SSC800 | 4 | 60 |
| 10 | SSC1000 | 4 | 60 |

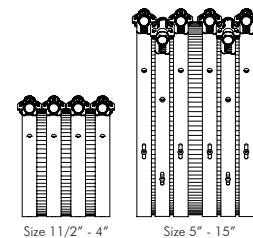


STANDARD LARGE DIAMETER STAINLESS STEEL COUPLINGS

| SIZE | ITEM CODE | # OF BANDS PER COUPLING | INSTALLATION TORQUE (in. LBS.) |
|------|-----------|-------------------------|--------------------------------|
| 12 | SSC1200 | 6 | 80 |
| 15 | SSC1500 | 6 | 80 |

EXTRA HEAVY DUTY STAINLESS STEEL COUPLING

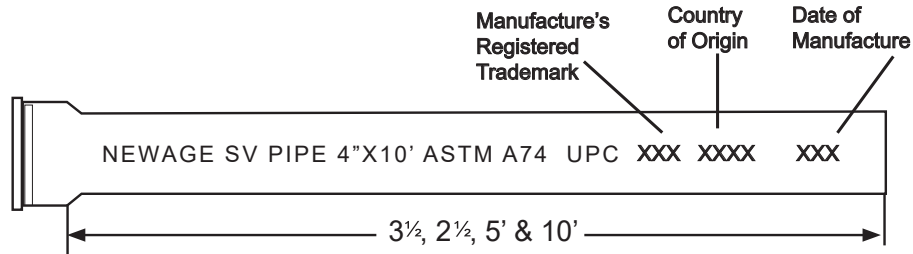
| SIZE | ITEM CODE | # OF BANDS PER COUPLING | INSTALLATION TORQUE (in. lbs.) |
|-------|-----------|-------------------------|--------------------------------|
| 1 1/2 | XHDC150 | 4 | 80 |
| 2 | XHDC200 | 4 | 80 |
| 3 | XHDC300 | 4 | 80 |
| 4 | XHDC400 | 4 | 80 |
| 5 | XHDC500 | 6 | 80 |
| 6 | XHDC600 | 6 | 80 |
| 8 | XHDC800 | 6 | 80 |
| 10 | XHDC1000 | 6 | 80 |
| 12 | XHDC1200 | 6 | 80 |
| 15 | XHDC1500 | 6 | 80 |





SERVICE WEIGHT

Service Weight Cast Iron Soil Pipe and Fittings as per ASTM A74



SINGLE HUB 3.5 FT PIPE

| PART # | SIZE | Piece per Bundle | WEIGHT |
|----------|----------|------------------|--------|
| SVP02S35 | 2 x 3.5 | 56 | 15.00 |
| SVP03S35 | 3 x 3.5 | 40 | 23.00 |
| SVP04S35 | 4 x 3.5 | 27 | 30.00 |
| SVP05S35 | 5 x 3.5 | 21 | 39.00 |
| SVP06S35 | 6 x 3.5 | 18 | 45.00 |
| SVP08S35 | 8 x 3.5 | 10 | 72.00 |
| SVP10S35 | 10 x 3.5 | 6 | 106.00 |
| SVP12S35 | 12 x 3.5 | 6 | 135.00 |
| SVP15S35 | 15 x 3.5 | 2 | 184.00 |

SINGLE HUB 10 FT PIPE

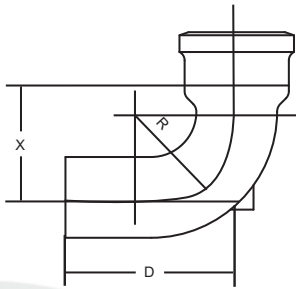
| PART # | SIZE | Piece per Bundle | WEIGHT |
|----------|---------|------------------|--------|
| SVP02S10 | 2 x 10 | 64 | 35.00 |
| SVP03S10 | 3 x 10 | 33 | 52.00 |
| SVP04S10 | 4 x 10 | 27 | 76.00 |
| SVP05S10 | 5 x 10 | 21 | 97.00 |
| SVP06S10 | 6 x 10 | 18 | 128.00 |
| SVP08S10 | 8 x 10 | 10 | 190.00 |
| SVP10S10 | 10 x 10 | 6 | 270.00 |
| SVP12S10 | 12 x 10 | 6 | 325.00 |
| SVP15S10 | 15 x 10 | 2 | 465.00 |

SINGLE HUB 5 FT PIPE

| PART # | SIZE | Piece per Bundle | WEIGHT |
|----------|--------|------------------|--------|
| SVP02S05 | 2 x 5 | 64 | 22.48 |
| SVP03S05 | 3 x 5 | 33 | 31.83 |
| SVP04S05 | 4 x 5 | 27 | 44.80 |
| SVP05S05 | 5 x 5 | 21 | 57.60 |
| SVP06S05 | 6 x 5 | 18 | 69.16 |
| SVP08S05 | 8 x 5 | 10 | 101.01 |
| SVP10S05 | 10 x 5 | 6 | 150.87 |
| SVP12S05 | 12 x 5 | 6 | 185.72 |
| SVP15S05 | 15 x 5 | 2 | 287.48 |

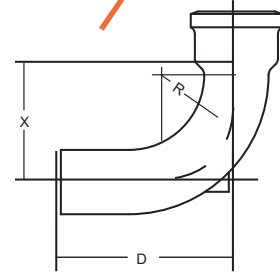
DOUBLE HUB 2.5 FT PIPE

| PART # | SIZE | Piece per Bundle | WEIGHT |
|----------|---------|------------------|--------|
| SVP02D25 | 2 x 2.5 | 60 | 22.00 |
| SVP03D25 | 3 x 2.5 | TBA | 31.83 |
| SVP04D25 | 4 x 2.5 | 27 | 44.80 |



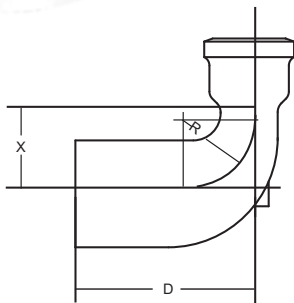
1/4 BEND* 90°

| PART # | SIZE | D | R | X |
|-----------|------|--------|-------|--------|
| SVFO4B20 | 2 | 6 | 3 | 3 1/4 |
| SVFO4B30 | 3 | 7 | 3 1/2 | 4 |
| SVFO4B40 | 4 | 8 | 4 | 4 |
| SVFO4B50 | 5 | 8 1/2 | 4 1/2 | 5 |
| SVFO4B60 | 6 | 9 | 5 | 5 1/2 |
| SVFO4B80 | 8 | 11 1/2 | 6 | 6 5/8 |
| SVFO4B100 | 10 | 12 1/2 | 7 | 7 5/8 |
| SVFO4B120 | 12 | 15 | 8 | 8 3/4 |
| SVFO4B150 | 15 | 16 1/2 | 9 1/2 | 10 1/4 |



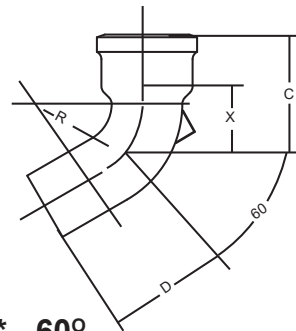
SHORT SWEEP BEND* - 90°

| PART # | SIZE | D | R | X |
|-----------|------|--------|-------|--------|
| SVFSSB20 | 2 | 8 | 5 | 5 1/4 |
| SVFSSB30 | 3 | 9 | 5 1/2 | 6 |
| SVFSSB40 | 4 | 10 | 6 | 6 1/2 |
| SVFSSB50 | 5 | 10 1/2 | 6 1/2 | 7 |
| SVFSSB60 | 6 | 11 | 7 | 7 1/2 |
| SVFSSB80 | 8 | 13 1/2 | 8 | 8 5/8 |
| SVFSSB100 | 10 | 14 1/2 | 9 | 9 5/8 |
| SVFSSB120 | 12 | 17 | 10 | 10 3/4 |



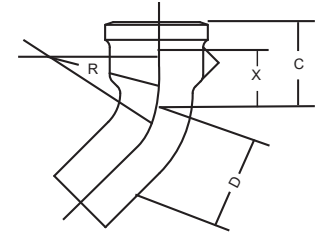
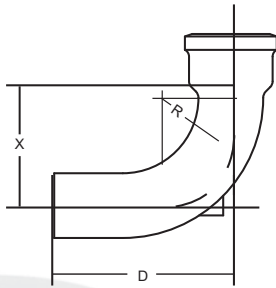
REDUCING* 1/4 BEND * - 90°

| PART # | SIZE | D | R | X |
|-----------|-------|---|-------|-------|
| SVFO4B420 | 4 x 2 | 7 | 3 1/4 | 3 3/4 |



1/6 BEND* - 60°

| PART # | SIZE | C | D | R | X |
|----------|------|---------|--------|-------|---------|
| SVF06B20 | 2 | 4 1/2 | 4 3/4 | 3 | 2 |
| SVF06B30 | 3 | 5 1/4 | 5 1/2 | 3 1/2 | 2 1/2 |
| SVF06B40 | 4 | 5 13/16 | 6 5/16 | 4 | 2 13/16 |
| SVF06B50 | 5 | 6 1/8 | 6 5/8 | 4 1/2 | 3 1/8 |
| SVF06B60 | 6 | 6 3/8 | 6 7/8 | 5 | 3 3/8 |
| SVF06B80 | 8 | 7 5/8 | 9 | 6 | 4 1/8 |
| SVF06B10 | 10 | 8 3/16 | 9 9/16 | 7 | 4 11/16 |

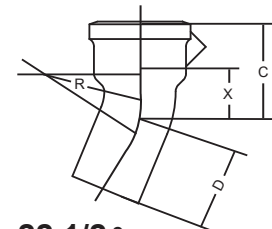
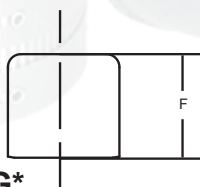


LONG SWEEP BEND* - 90°

| PART # | SIZE | D | R | X |
|-----------|------|--------|--------|--------|
| SVFLSB20 | 2 | 11 | 8 | 8 1/4 |
| SVFLSB30 | 3 | 12 | 8 1/2 | 9 |
| SVFLSB40 | 4 | 13 | 9 | 9 1/2 |
| SVFLSB50 | 5 | 13 1/2 | 9 1/2 | 10 |
| SVFLSB60 | 6 | 14 | 10 | 10 1/2 |
| SVFLSB80 | 8 | 16 1/2 | 11 | 11 5/8 |
| SVFLSB100 | 10 | 17 1/2 | 12 | 12 5/8 |
| SVFLSB120 | 12 | 20 | 13 | 13 3/4 |
| SVFLSB150 | 15 | 21 1/2 | 14 1/2 | 15 1/4 |

1/8 BEND* - 45°

| PART # | SIZE | C | D | R | X |
|-----------|------|---------|---------|-------|---------|
| SVFO8B20 | 2 | 4 | 4 1/4 | 3 | 1 1/2 |
| SVFO8B30 | 3 | 4 1/16 | 4 15/16 | 3 1/2 | 1 15/16 |
| SVFO8B40 | 4 | 5 3/16 | 5 11/16 | 4 | 2 3/16 |
| SVFO8B50 | 5 | 5 3/8 | 5 7/8 | 4 1/2 | 2 3/8 |
| SVFO8B60 | 6 | 5 9/16 | 6 1/16 | 5 | 2 9/16 |
| SVFO8B80 | 8 | 6 5/8 | 8 | 6 | 3 1/8 |
| SVFO8B100 | 10 | 7 | 8 3/8 | 7 | 3 1/2 |
| SVFO8B120 | 12 | 8 5/16 | 10 5/16 | 8 | 4 1/16 |
| SVFO8B150 | 15 | 8 15/16 | 10 5/16 | 9 1/2 | 4 11/16 |

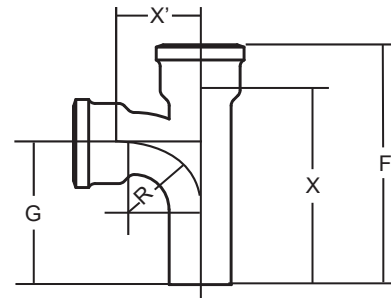
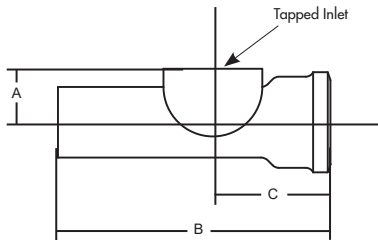


BLIND PLUG*

| PART # | SIZE | F |
|-----------|------|-------|
| SVFPLG20 | 2 | 3 1/2 |
| SVFPLG30 | 3 | 3 3/4 |
| SVFPLG40 | 4 | 4 |
| SVFPLG50 | 5 | 4 |
| SVFPLG60 | 6 | 4 |
| SVFPLG80 | 8 | 4 1/2 |
| SVFPLG100 | 10 | 4 1/2 |
| SVFPLG120 | 12 | 5 1/4 |
| SVFPLG150 | 15 | 5 1/4 |

1/16 BEND* - 22 1/2°

| PART # | SIZE | C | D | R | X |
|-----------|------|---------|---------|-------|---------|
| SVF16B20 | 2 | 3 3/8 | 3 5/8 | 3 | 7/8 |
| SVF16B30 | 3 | 3 15/16 | 4 3/16 | 3 1/2 | 1 3/16 |
| SVF16B40 | 4 | 4 5/16 | 4 13/16 | 4 | 1 5/16 |
| SVF16B50 | 5 | 4 3/8 | 4 7/8 | 4 1/2 | 1 3/8 |
| SVF16B60 | 6 | 4 1/2 | 5 | 5 | 1 1/2 |
| SVF16B80 | 8 | 5 5/16 | 6 11/16 | 6 | 1 13/16 |
| SVF16B100 | 10 | 5 1/2 | 6 7/8 | 7 | 2 |
| SVF16B120 | 12 | 6 5/8 | 8 7/8 | 8 | 2 3/8 |
| SVF16B150 | 15 | 6 7/8 | 8 7/8 | 9 1/2 | 2 5/8 |

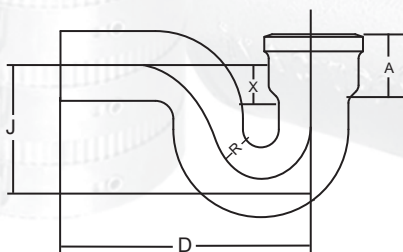


TEST TEE W/OUT BRASS PLUG*

| PART # | SIZE | A | B | C | TAP |
|-----------|------|---------|--------|-------|-----|
| SVFTTE20 | 2 | 2 | 10 3/8 | 4 1/4 | 2 |
| SVFTTE30 | 3 | 2 11/16 | 12 3/4 | 5 1/2 | 3 |
| SVFTTE40 | 4 | 3 | 13 7/8 | 6 | 4 |
| SVFTTE50 | 5 | 4 1/2 | 15 | 7 1/8 | 5 |
| SVFTTE60 | 6 | 5 | 16 | 7 1/8 | 6 |
| SVFTTE80 | 8 | 6 | 20 1/2 | 9 1/2 | 8 |
| SVFTTE100 | 10 | 6 1/2 | 20 1/2 | 9 7/8 | 10 |

SANITARY TEE*

| PART # | SIZE | F | G | R | X | X' |
|-----------|---------|--------|--------|-------|--------|--------|
| SVFSTE20 | 2 | 10 1/2 | 6 1/4 | 2 1/2 | 8 | 2 3/4 |
| SVFSTE32 | 3 x 2 | 11 3/4 | 7 | 3 | 9 | 4 |
| SVFSTE30 | 3 | 12 3/4 | 7 1/2 | 3 1/2 | 10 | 4 |
| SVFSTE42 | 4 x 2 | 12 | 7 | 3 | 9 | 4 1/2 |
| SVFSTE43 | 4 x 3 | 13 | 7 1/2 | 3 1/2 | 10 | 4 1/2 |
| SVFSTE40 | 4 | 14 | 8 | 4 | 11 | 4 1/2 |
| SVFSTE54 | 5 x 4 | 14 | 8 | 4 | 11 | 5 |
| SVFSTE50 | 5 | 15 | 8 1/2 | 4 1/2 | 12 | 5 |
| SVFSTE62 | 6 x 2 | 12 | 7 | 3 | 9 | 5 1/2 |
| SVFSTE63 | 6 x 3 | 13 | 7 1/2 | 3 1/2 | 10 | 5 1/2 |
| SVFSTE64 | 6 x 4 | 14 | 8 | 4 | 11 | 5 1/2 |
| SVFSTE60 | 6 | 16 | 9 | 5 | 13 | 5 1/2 |
| SVFSTE84 | 8 x 4 | 16 1/2 | 9 3/4 | 4 | 13 | 6 1/2 |
| SVFSTE86 | 8 x 6 | 18 1/2 | 10 3/4 | 5 | 15 | 6 1/2 |
| SVFSTE80 | 8 | 20 1/2 | 11 3/4 | 6 | 17 | 6 5/8 |
| SVFSTE104 | 10 x 4 | 16 1/2 | 9 3/4 | 4 | 13 | 7 1/2 |
| SVFSTE106 | 10 x 6 | 18 1/2 | 10 3/4 | 5 | 15 | 7 1/2 |
| SVFSTE108 | 10 x 8 | 20 1/2 | 11 3/4 | 6 | 17 | 7 5/8 |
| SVFSTE110 | 10 | 22 1/2 | 12 3/4 | 7 | 19 | 7 5/8 |
| SVFSTE126 | 12 x 6 | 20 3/4 | 12 | 5 | 16 1/2 | 8 1/2 |
| SVFSTE128 | 12 x 8 | 22 3/4 | 13 | 6 | 18 1/2 | 8 5/8 |
| SVFSTE120 | 12 x 10 | 24 3/4 | 14 | 7 | 20 1/2 | 8 5/8 |
| SVFSTE122 | 12 | 26 3/4 | 15 | 8 | 22 1/2 | 8 3/4 |
| SVFSTE150 | 15 | 29 3/4 | 16 1/2 | 9 1/2 | 25 1/2 | 10 1/4 |

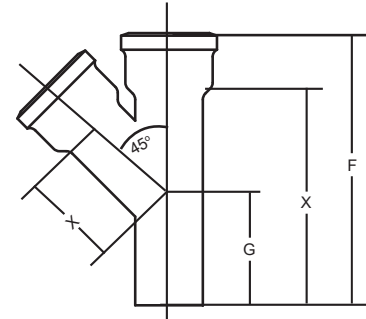


PLAIN- P TRAP*

| PART # | SIZE | A | D | J | X |
|------------|------|--------|---------|--------|--------|
| SVFPTPO20 | 2 | 3 | 9 1/2 | 4 | 1 1/2 |
| SVFPTPO30 | 3 | 4 1/2 | 12 | 5 1/2 | 1 1/4 |
| SVFPTPO40 | 4 | 5 1/2 | 14 | 6 1/2 | 1 |
| SVFPTPO50 | 5 | 6 1/2 | 15 1/2 | 7 1/2 | 15 1/2 |
| SVFPTPO60 | 6 | 7 1/2 | 17 | 8 1/2 | 17 |
| SVFPTPO80 | 8 | 10 1/2 | 22 1/16 | 11 | 22 |
| SVFPTPO100 | 10 | 13 | 25 | 14 3/8 | 25 |

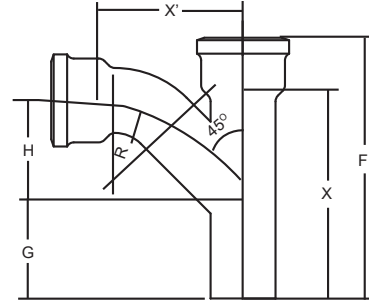
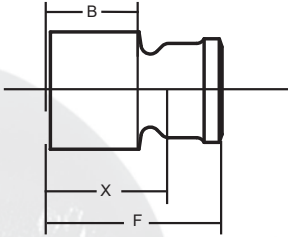
WYE*

| PART # | Size | F | G | X | X' |
|-----------|--------|--------|---------|--------|----------|
| SVFWYE20 | 2 | 10 1/2 | 4 | 8 | 4 |
| SVFWYE32 | 3 x 2 | 11 3/4 | 4 3/16 | 9 | 5 |
| SVFWYE30 | 3 | 13 1/4 | 5 | 10 1/2 | 5 1/2 |
| SVFWYE42 | 4 x 2 | 12 | 3 5/8 | 9 | 5 3/4 |
| SVFWYE43 | 4 x 3 | 13 1/2 | 4 7/16 | 10 1/2 | 6 1/4 |
| SVFWYE40 | 4 | 15 | 5 1/4 | 12 | 9 |
| SVFWYE52 | 5 x 2 | 12 | 3 1/8 | 9 | 6 1/2 |
| SVFWYE53 | 5 x 3 | 13 1/2 | 3 7/8 | 10 1/2 | 7 |
| SVFWYE54 | 5 x 4 | 15 | 4 11/16 | 12 | 7 1/2 |
| SVFWYE50 | 5 | 16 1/2 | 5 1/2 | 13 1/2 | 8 |
| SVFWYE62 | 6 x 2 | 12 | 2 9/16 | 9 | 7 1/4 |
| SVFWYE63 | 6 x 3 | 13 1/2 | 3 3/8 | 10 1/2 | 7 3/4 |
| SVFWYE64 | 6 x 4 | 15 | 4 3/16 | 12 | 8 1/4 |
| SVFWYE65 | 6 x 5 | 16 1/2 | 4 15/16 | 13 1/2 | 8 3/4 |
| SVFWYE60 | 6 | 18 | 5 3/4 | 15 | 9 1/4 |
| SVFWYE82 | 8 x 2 | 14 | 3 1/8 | 10 1/2 | 8 1/2 |
| SVFWYE83 | 8 x 3 | 15 1/2 | 3 15/16 | 12 | 9 |
| SVFWYE84 | 8 x 4 | 17 | 4 3/4 | 13 1/2 | 9 1/2 |
| SVFWYE85 | 8 x 5 | 18 1/2 | 5 1/2 | 15 | 10 |
| SVFWYE86 | 8 x 6 | 20 | 6 5/16 | 16 1/2 | 10 1/2 |
| SVFWYE80 | 8 | 23 | 7 11/16 | 19 1/2 | 11 13/16 |
| SVFWYE103 | 10 x 3 | 15 1/2 | 2 3/4 | 12 | 10 3/4 |
| SVFWYE104 | 10 x 4 | 17 | 3 9/16 | 13 1/2 | 11 1/8 |
| SVFWYE105 | 10 x 5 | 18 1/2 | 4 5/16 | 15 | 11 5/8 |
| SVFWYE106 | 10 x 6 | 20 | 5 1/2 | 16 1/2 | 12 1/8 |
| SVFWYE108 | 10 x 8 | 23 | 6 1/2 | 19 1/2 | 13 7/18 |
| SVFWYE100 | 10 | 26 | 8 | 22 1/2 | 14 1/2 |
| SVFWYE124 | 12 x 4 | 19 1/4 | 4 1/8 | 15 1/2 | 12 7/8 |
| SVFWYE125 | 12 x 5 | 20 3/4 | 4 7/8 | 16 1/2 | 12 15/16 |
| SVFWYE126 | 12 x 6 | 22 1/4 | 5 11/16 | 18 | 13 7/16 |
| SVFWYE128 | 12 x 8 | 25 1/4 | 7 1/16 | 21 | 14 3/4 |



WYE* (continued)

| PART # | Size | F | G | X | X' |
|------------|---------|--------|--------|--------|----------|
| SVFWYE1210 | 12 x 10 | 28 1/4 | 8 9/16 | 24 | 15 13/16 |
| SVFWYE1200 | 12 | 31 1/4 | 10 1/8 | 27 | 16 7/8 |
| SVFWYE1540 | 15 x 4 | 19 1/2 | 2 1/2 | 15 1/4 | 15 |
| SVFWYE1560 | 15 x 6 | 22 1/4 | 4 | 18 | 15 3/4 |
| SVFWYE1580 | 15 x 8 | 25 1/4 | 5 3/8 | 21 | 17 1/16 |
| SVFWYE1510 | 15 x 10 | 28 1/4 | 6 7/8 | 24 | 18 1/8 |
| SVFWYE1512 | 15 x 12 | 31 1/4 | 8 7/16 | 27 | 19 3/16 |
| SVFWYE1500 | 15 | 35 3/4 | 10 3/4 | 31 1/2 | 20 3/4 |

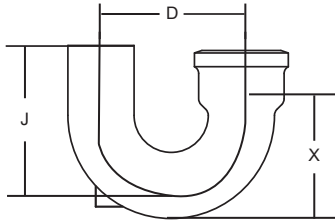


REDUCER*

| PART # | SIZE | B | F | X |
|-----------|--------|-------|--------|-------|
| SVFRED32 | 3 x 2 | 4 1/2 | 9 | 6 |
| SVFRED42 | 4 x 2 | 4 1/2 | 9 | 6 |
| SVFRED43 | 4 x 3 | 4 1/2 | 9 | 6 |
| SVFRED52 | 5 x 2 | 4 1/2 | 9 | 6 |
| SVFRED53 | 5 x 3 | 4 1/2 | 9 1/2 | 6 |
| SVFRED54 | 5 x 4 | 5 1/4 | 9 1/2 | 6 1/2 |
| SVFRED62 | 6 x 2 | 5 1/4 | 9 1/2 | 6 1/2 |
| SVFRED63 | 6 x 3 | 5 1/4 | 9 1/2 | 6 1/2 |
| SVFRED64 | 6 x 4 | 5 1/4 | 10 | 6 1/2 |
| SVFRED65 | 6 x 5 | 5 1/4 | 10 | 6 1/2 |
| SVFRED84 | 8 x 4 | 5 1/4 | 9 1/2 | 6 1/2 |
| SVFRED85 | 8 x 5 | 5 1/4 | 10 | 6 1/2 |
| SVFRED86 | 8 x 6 | 5 1/4 | 10 | 6 1/2 |
| SVFRED104 | 10 x 4 | 5 1/4 | 10 3/4 | 6 1/2 |

COMBINATION WYE & 1/8 BEND*

| PART# | SIZE# | F | G | H | R | X | X' |
|----------|-------|--------|---------|---------|-------|--------|--------|
| SVFCOM20 | 2 | 10 1/2 | 4 | 3 3/8 | 3 | 8 | 4 7/8 |
| SVFCOM32 | 3 x 2 | 11 3/4 | 4 3/16 | 4 | 3 | 9 | 5 3/4 |
| SVFCOM30 | 3 | 13 1/4 | 5 | 5 1/16 | 3 1/2 | 10 1/2 | 7 |
| SVFCOM42 | 4 x 2 | 12 | 3 11/16 | 4 1/2 | 3 | 9 | 6 1/4 |
| SVFCOM43 | 4 x 3 | 3 1/2 | 4 1/2 | 5 9/16 | 3 1/2 | 10 1/2 | 7 1/2 |
| SVFCOM40 | 4 | 15 | 5 1/4 | 6 13/16 | 4 | 12 | 9 |
| SVFCOM52 | 5 x 2 | 12 | 3 1/2 | 5 | 3 | 9 | 6 3/4 |
| SVFCOM53 | 5 x 3 | 13 1/2 | 4 | 6 1/16 | 3 1/2 | 10 | 8 |
| SVFCOM54 | 5 x 4 | 15 | 4 1/4 | 7 5/16 | 4 | 12 | 9 1/2 |
| SVFCOM50 | 5 | 16 1/2 | 5 1/2 | 8 5/8 | 4 1/2 | 13 1/2 | 11 |
| SVFCOM62 | 6 x 2 | 18 | 2 11/16 | 5 1/2 | 3 | 9 | 7 1/4 |
| SVFCOM63 | 6 x 3 | 17 | 3 1/16 | 6 9/16 | 3 1/2 | 10 1/4 | 8 1/2 |
| SVFCOM64 | 6 x 4 | 20 | 4 1/4 | 7 13/16 | 4 | 12 | 10 |
| SVFCOM65 | 6 x 5 | 23 | 5 1/16 | 9 1/16 | 4 1/2 | 13 1/2 | 11 1/2 |
| SVFCOM60 | 6 | - | 5 3/4 | 10 5/16 | 5 | 15 | 12 7/8 |
| SVFCOM84 | 8 x 4 | - | 4 3/4 | 8 13/16 | 4 | 13 1/2 | 11 |
| SVFCOM86 | 8 x 6 | - | 6 5/16 | 11 5/16 | 5 | 16 1/2 | 13 7/8 |
| SVFCOM80 | 8 | - | 7 11/16 | 13 7/8 | 6 | 19 1/2 | 17 |



SINGLE HUB RETURN BEND*

| PART# | SIZE | D | J | X |
|----------|------|-------|--------|-------|
| SVFRBD03 | 3 | 7 | 7 | 6 |
| SVFRBD04 | 4 | 7 1/2 | 7 3/16 | 6 3/8 |

SV GASKET*

| PART # | Size | WEIGHT |
|-----------|------|--------|
| SVGMS200 | 2 | 0.3 |
| SVGMS300 | 3 | 0.4 |
| SVGMS400 | 4 | 0.6 |
| SVGMS500 | 5 | 1.2 |
| SVGMS600 | 6 | 1.4 |
| SVGMS800 | 8 | 1.6 |
| SVGMS1000 | 10 | 2.0 |
| SVGMS1200 | 12 | 2.5 |
| SVGMS1500 | 15 | 3.8 |



General Terms and Conditions

GENERAL

These terms and conditions shall control with respect to any purchase order or sale of Sellers products. No waiver, alteration or modification of these terms and conditions whether on Buyers purchase order or otherwise shall be valid unless the waiver, alteration, or modification is specifically accepted in writing and signed by an authorized representative of Seller.

DELIVERY

Seller will make any effort to complete delivery of products as indicated on Sellers acceptance of an order, but Seller assumes no responsibility or liability, and will accept no back charge, for loss or damage due to delay or inability to deliver caused by acts of God, war, labor difficulties, accident, delays of carriers, by contractors or suppliers, inability to obtain materials, shortages of fuel or energy, or any other causes of any kind whatsoever beyond the control of Seller. Seller may terminate any contract of sale of its products without liability of any nature, by written notice of Buyer, in the event that the delay in delivery or performance resulting from any of the aforesaid causes shall continue for a period of sixty (60) days. Under no circumstances shall Seller be liable for any special or consequential damages or for loss, damage, or expense (whether or not based on negligence) directly or indirectly arising from delays or failure to give notice of delay.

WARRANTY

Seller warrants for five years from the date of shipment Sellers manufactured products to the extent that Seller will replace those having defects in material or workmanship when used for the purpose and in the manner which Seller recommends. If Sellers examination shall disclose to its satisfaction that the product is defective, and an adjustment is required, the amount of such adjustment shall not exceed the net sales price of the defective products only and no allowance will be made for labor or expense of repairing or replacing defective product or workmanship or damage resulting from the same. No adjustment shall be implemented unless product in question is returned to seller in its originally installed condition, still connected to other components of the joint. Buyer must contact Seller as quickly as possible so Seller can assess product in its installed condition. No claims will be honored unless claim is made within forty five (45) days of the defect being found. Where engineering design or fabrication work is supplied, Buyers acceptance of Sellers design or of delivery of work shall relieve Seller of all further obligation, other than expressed in Sellers product warranty. THIS IS SELLERS SOLE WARRANTY. SELLERS MAKES NO OTHER WARRANTY OF ANY KIND, EXPRESSED OR IMPLIED AND ALL IMPLIED WARRANTIES OF MERCHANTABILITY AND FITNESS FOR A PARTICULAR PURPOSE WHICH EXCEED SELLERS AFORESTATED OBLIGATION ARE HEREBY DISCLAIMED BY SELLER AND EXCLUDED FROM THIS WARRANTY. Seller neither assumes, nor authorizes any person to assume for it, any other obligation in connection with the sale of its engineering designs or product. This warranty shall not apply to any products or parts of products which (a) have been repaired or altered outside of Sellers factory, in any manner; (b) have been subjected to misuse, negligence or accidents; (c) have been used in a manner contrary to Sellers instructions or recommendations. Seller shall not be responsible for design errors due to inaccurate or incomplete information supplied by Buyer or its representatives. This warranty is non-transferable.

LIABILITY

Seller will not be liable for any loss, damage, cost of repairs, incidental or consequential damages of any kind, whether based upon warranty (except for the obligation accepted by Seller under warranty above), contract or negligence, arising in connection with the design, manufacture, sale, use or repair of the products or of the engineering designs supplied to Buyer.

RETURNS

Seller cannot accept return of any products unless its written permission has been first obtained, in which case same will be credited subject to the following: (a) All material returned must, on its arrival at Sellers plant, be found to be in first-class condition; if not, cost of putting in saleable condition will be deducted from credit memoranda; (b) A handling charge deduction of twenty five percent (25%) will be made from all credit memoranda issued for material returned; (c) transportation charges, if not prepaid will be deducted from credit memoranda.

SHIPMENTS

All products sent out will be carefully examined, counted, and packed. The cost of any special packing or special handling caused by Buyers requirements or request shall be added to the amount of the order. No claim for shortages will be allowed unless made in writing within ten (10) days of receipt of a shipment. Claims for products damaged or lost in transit should be made on the carrier, as Sellers responsibility ceases, and title passes, on delivery to the carrier.

PRODUCTS

Orders covering special or non-standard products are not subject to cancellation except on such terms as Seller may specify on application.

PRICES

Prices and designs are subject to change without notice. All prices are F.O.B. Point of Shipment, unless otherwise stated.

TAXES

The amount of any sales, excise or other taxes, if any, applicable to the products covered by this order, shall be added to the purchased price and shall not be paid by Buyer unless buyer provides Seller with an exemption certificate acceptable to the taxing authorities.